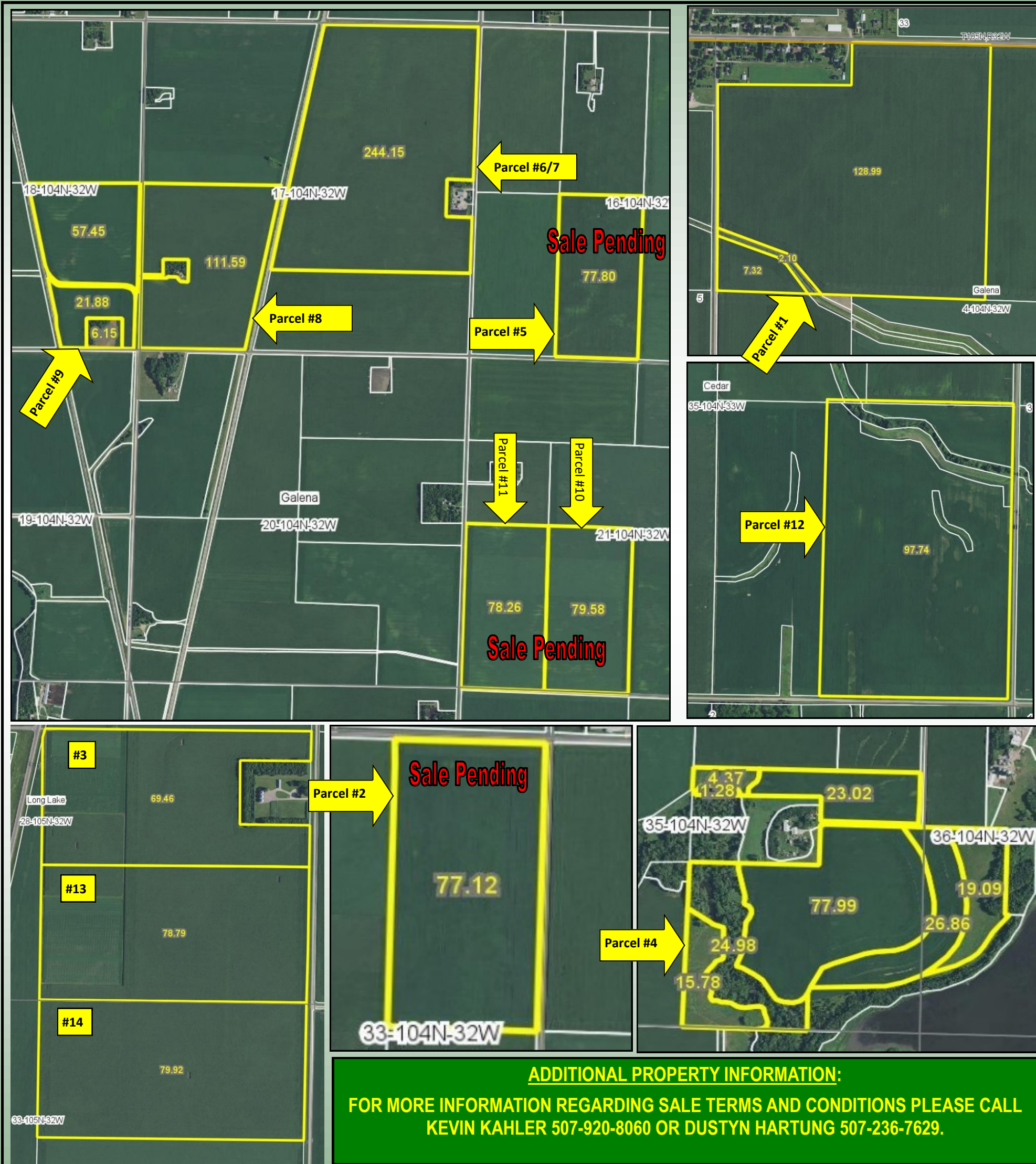


**1,503.31 Acres +/- in Galena & Cedar Twps, Martin Co.,
& Long Lake Twp, Watonwan Co., MN & 6.32 ac. Building Site**

FARMLAND FOR SALE BY PRIVATE TREATY

PROPERTY LOCATION: These parcels are located Northeast of Trimont, MN approx. 4 miles in Martin Co. and Northeast of Ormsby, MN approx. 1 1/2 miles in Watonwan Co.

PROPERTY DESCRIPTIONS: Parcels are top producing farms, flat to gently rolling with excellent soil types!



ADDITIONAL PROPERTY INFORMATION:
FOR MORE INFORMATION REGARDING SALE TERMS AND CONDITIONS PLEASE CALL
KEVIN KAHLER 507-920-8060 OR DUSTYN HARTUNG 507-236-7629.

REAL ESTATE SALES STAFF

ALLEN KAHLER-CAI-MN/IA Broker #RA-41579 & B57538000

KEVIN KAHLER-507-920-8060

DUSTYN HARTUNG-507-236-7629



www.landservicesunlimited.com

923 N State St, Suite 170 Fairmont, MN 56031
507-238-4318